



“We Make VoIP Easy”

THE ATLAS COMMAND VIEW OPERATORS CONSOLE

Optional software for the ATLAS AVM IP PBX

ATLAS Telecom introduces our latest enhancement for the ATLAS AVM IP PBX, the COMMAND VIEW. The COMMAND VIEW Operators software is loaded on to a Windows based PC and provides ATLAS AVM users an extremely feature rich Operators Console. The COMMAND VIEW is easy to setup, easy to use and can be customized in an almost infinite number of ways to meet the needs of any enterprise.

BELOW IS A GENERAL OVERVIEW AND SELECTIVE SCREEN SHOTS OUTLINING SOME OF **COMMAND VIEW'S** MOST POPULAR CAPABILITIES!

Configurable layout

You can customize the layout of **Command View** by moving the tabs to create your most efficient layout. Tabs can be linked together or even detached from the entire layout. Resizing is done by grabbing an edge of the tab and dragging to the size you want. Tabs can further be customized by minimizing them into a **Fast View**, see below.

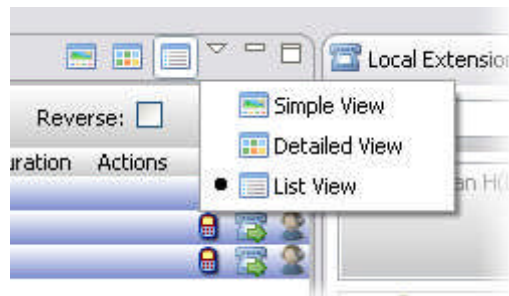
Multiple Views

Command View offers a lot of customization. You can choose multiple ways to display the extensions you are managing including all of the remote extensions. **Simple View** is the classic view you are use to seeing. **Detailed view** shows the extension along with multiple calls. The **List view** shows a grid-like format and will also show you if the extension is connected to multiple channels at that time. It's your choice!

Command View's use and navigation tabs makes for a fast, easy and customized set-up.

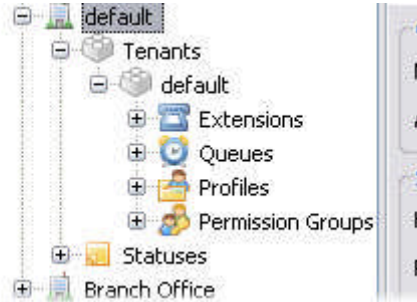
General setups include:

- Simple View
- Detailed View
- List View
- Fast View



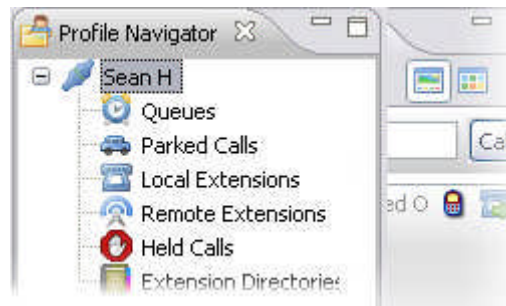
Multiple Location, Tenant and Profile Support

Multiple offices with separate Server installations? **Command View** fully supports multiple locations multi-tenant configurations and can monitor multiple extensions for each client installed. All of these settings are managed via a single interface. Dynamically manage connections to each server and edit each of the tenants for multi-tenant installations. Each profile and their **permissions**, (Class of Service) are managed on a per location basis.



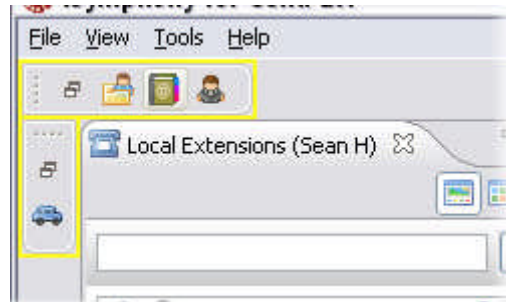
Profile Navigator

Manage all the tabs of your **Command View** installation within one tab. No matter how many profiles you're using you see all of them through the Profile Navigator. The Profile Navigator features include Queues, Held Calls, Parked Calls, Local Extensions, Remote Extensions and Extension Directories all from one location.



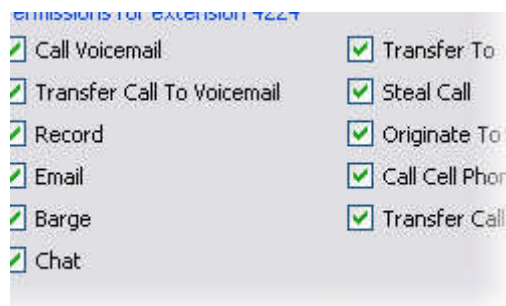
Fast Views

Need quick access to a module but don't use it that often? Fast View provides a quick way to dock the modules for easy access. You can dock them in one Fast View or multiple views, the choice is yours. You can even move them to the side of the application you choose to work with.



Permissions, (Class of Service)

Global and detailed permissions are **Command View's** strong point. The administrator can define and manage each profile and what actions that profile can perform. One example of the permission structure is to disable barging into and recording on the CEO's phone, but his executive assistant needs to perform these actions. The administrator can grant the assistant permissions to barge in and record the CEO's phone calls while no one else in the organization is able to.



Conference Rooms

Command View can monitor static conferences or even create your own dynamic conference room. Drag and drop extensions into your newly created room. Need to collaborate with someone on a current call? Create a conference room drop your call in the room area and invite other users to join the conference.

Queues/Agents

Dynamically log agents in or out. Each user can see if the agent is logged in and taking queue calls. See each of the queues that are being managed by **Command View** and how many calls are in each of them. Agents can dynamically take/make calls in or out of each queue being managed.

Extension Directories

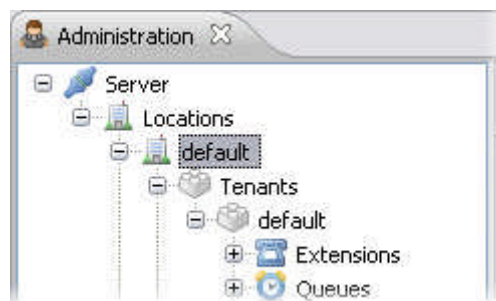
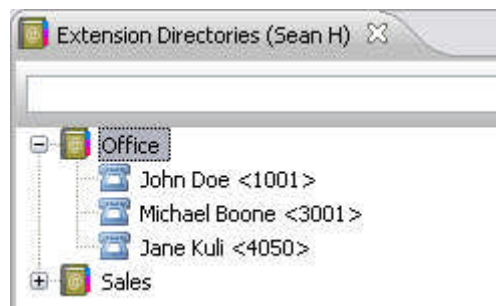
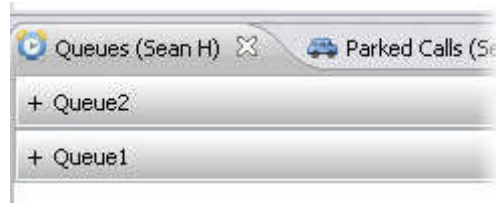
Creating phone books is easy. Simply open the Extension Directories module via the Profile Navigator and you'll see the available directories. If permissible the users can drag and drop the available extensions into the directory of their choosing and then choose to only display them in the Remote Extensions list.

Administration Interface

All features in **Command View** are managed in a single interface. No matter how many servers you're connecting to with **Command View** you can easily make modifications in a secure manner.

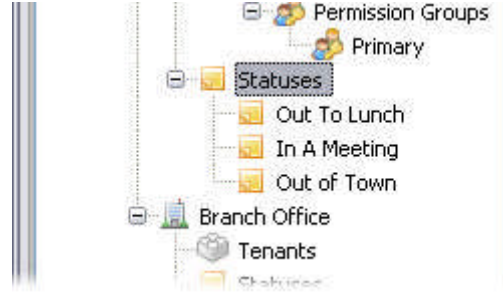
Chat

Enterprise level chat is possible through Jabber integration. With the Jabber server of your choice installed **Command View** connects and manages those connections in a module. You can even have multiple chats happening at the same time!



Customized Presences

Command View supports custom presences to be displayed. Out of office, out to lunch or even in a meeting. Create your own “presence status tracking” to fit your business needs. Users can select a time they will be returning. This time is displayed to people by selecting their extension. Not enough? Make a note about your status before setting your status.



“We make VoIP easy!”